

Maplan News



The Elastomer Injection Technology Report

April 2014



MAPLAN's new Lean Management

A complete restructuring of the machine production

Page 2



Machinery + PLANing

Presentation of MAPLAN's USA branch

Page 3



New dimensions: Big, bigger - 320t

The new 320 tonne vertical machine of MAPLAN

Page 4

Editorial



Dear readers!

For MAPLAN 2013 was a very successful year particular with regard to the K fair in Düsseldorf. We had the opportunity to personally meet with many customers and partners.

On June 4th and 5th, 2014, the "MAPLAN Days of Technology" will take place in Ternitz. During this event MAPLAN and our partners will present some of the latest developments in our industry. We are sure that you will find a wealth of information about rubber production by visiting our exhibitions and conferences. An evening at the Belvedere Palace in Vienna will be the cultural highlight. We hope to see many participants again on that occasion.

A few words of introduction about the Soulier family; for all those who do not know us yet - apart from the fact that since the beginning of 2012, we are the new owners of MAPLAN. We are a French-Austrian couple married since 33 years with 5 adult children. Our origins are industrial with an emphasis on mechanical engineering. Additionally we are also specialised in real estate development in Vienna.

Our efforts are focused on having MAPLAN offer you the best machines on the market: based on innovation, synergy and increased productivity.

We wish you a pleasant time reading,

Ingrid & Philippe Soulier

MAPLAN Days of Technology 2014

Our Open Days "MAPLAN Days of Technology" will take place on June 4th and 5th



We are pleased to hold our exhibition "MAPLAN Days of Technology" this late Spring. This internal exhibition took place for the first time in 2008 and was a big success. The next opportunity to view innovation and "state of the art" technology will be on the 4th & 5th June in Ternitz and Vienna.

"MAPLAN Days of Technology" encompasses a varied professional encounter based on elastomer injection moulding machines. This event is designed to be an interesting platform for information on the subject of machines and accessories for our clients and partners.

The conferences will cover automation, quality and application technology as well as energy efficiency and cost savings.

Many machine innovations will be shown in the MAPLAN exhibition hall. We have also planned

speeches by industry experts with presentations from these partners among others:

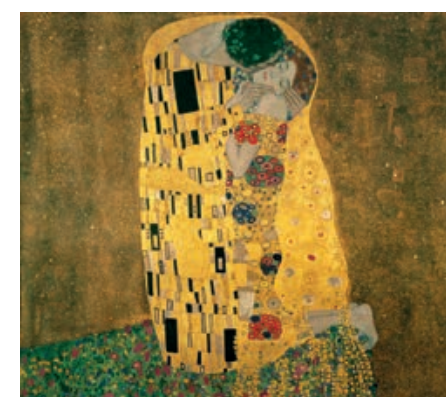
- PETA
- GOTEC
- SIGMASOFT
- T.I.G.
- ROBOTIX
- Harburg
- Freudenberger
- Universität
- Leoben
- ... and more

These two days will offer many opportunities to network and develop new ideas.

The evening program involves an elegant event at the world famous Belvedere Palace in Vienna. There will be a special tour around the Belvedere Museum where our guests will have the opportunity

to admire the impressive painting "The Kiss" from the Austrian artist Gustav Klimt.

We will then celebrate in style in the historical Marble Hall with a breath-taking view of Vienna, where that the State treaty of Austria was signed in May 1955.



"The Kiss" Gustav Klimt



Individual technological consultation of MAPLAN and partners



MAPLAN Production

MAPLAN's new Lean Management

A complete restructuring of the machine production under the motto "go to Gemba"

It is our aim to ensure that MAPLAN remains a globally competitive benchmark always at the highest level.

For this reason we are currently working on a factory involving the concept of Lean Management and production.

Lean Management means that all involved persons actively participate in the process and contribute to improvements increasing efficiency and productivity.

The existing structures will be analysed intensively and focused on "Lean Management" principles. From this we have worked out a shop floor management system that is specifically designed for our needs and is sustainable.

This type of management is a preliminary basic condition for the successful implementation of modern management techniques such as Lean Management, Lean Sigma, or Six-Sigma.

Now, the complete management perspective is concentrated on the corporate base which is the shop floor. This recognises production as being the actual place where added value takes place.

"developing improvement potential together with the people involved"

With our active management concept, each individual employee will be guided in his capacity for maximum productivity. The aim is that all processes are carried out in a manner as efficient, flexible and error-free as possible.

In this context, the prime characteristic is the active presence of executives involved in the whole value chain. In this way, we will be able to face challenges by finding and implementing remedies quickly. We are developing improvement potential together with the people



MAPLAN's reorganised production hall

directly involved. Employees are made aware of the fact that each of them is a specialist in their area of knowledge, thus motivating them to contribute to improvements. We encourage employees to make independent decisions!

It is the shop floor board which holds the most important place for communicating and exchanging information. It is with this group that we gather our whole range of figures, objectives, challenges, and projects to present them in a simple and clear manner. Here daily short meetings take place discussing current situations.

As a result of implementing of this new management philosophy, our employees are guided to a more detailed evaluation of the processes related to their field of knowledge. This gives them the opportunity to directly present ideas and propose solutions when challenges and problems occur.

With these changes MAPLAN has succeeded in making a breakthrough, which will improve productivity, quality and meeting deadlines.

Uwe Weber, Production Manager



"The shop floor board is a central place for communication and information exchange"

MAPLAN Team

Uwe Weber - Production Manager

- Age: 47
- Married
- Study: industrial engineering
- Hobbies: motorcycling, hiking

My career started with vocational training as a machine mechanic, which took place at the firm Wohlhaupter and the University of Stuttgart-Vaihingen. Following that, I acquired several years of experience in the field of manufacture and assembly.

After completing my studies, I had taken over the production management at a well-known company in

the field of mechanical and plant engineering; I held that position for nearly 15 years.



Since October 2013 I have been Production Manager at MAPLAN. I am happy to be able to contribute my knowledge acquired over the last 15 years to benefit MAPLAN.

In my spare time I enjoy discovering Austria and Europe by hiking and motorcycling.

Did you know?

50 countries

MAPLAN machines stand on all 5 continents in over 50 countries

32 years

The eldest MAPLAN machine was shipped in 1982 and still produces rubber parts today

99 %

MAPLAN exports 99% of its machines to foreign countries

400 tonnes

Up to 400 tonnes of elastomer material is produced per year on one MAPLAN machine

<0,2 g

The smallest part that has ever been produced on a MAPLAN machine

128 kg

The heaviest part produced on a MAPLAN machine until today

51 tonnes

Weight of the heaviest rubber injection moulding machine that has ever been made by MAPLAN

50 %

Of MAPLAN machines are used for the automotive industry

MAPLAN Customer application

AS-Z Baesweiler goes for MAPLAN

MAPLAN C-frame machine distinguishes itself through innovative machine technology, flexibility and high quality control unit



Last year the German company AS-Z (Andreas Satzowski Zerspanungstechnik) located in Baesweiler purchased a MAPLAN C-frame machine MTF250/40C. The machine was delivered in December 2013.

The purchase decision for MAPLAN was based on the adaptability of MAPLAN on machine specifications as well as the outstanding characteristics of the PC 5000 touch control interface.

Toolmaker Martin Link and Andreas Satzowski, Manager of AS-Z

“flexibility for customers’ specific needs“

“It is their flexible way of taking account of our specific needs as a tool manufacturer which has made us enthusiastic. At this point I would like to emphasize our harmonious collaboration with the MAPLAN employee, Mr. Gerald Kemper” says Andreas Satzowski, managing director of AS-Z.

AS-Z is manufacturing tools for well known profile and profile angle manufacturers such as Hutchinson, Meteor, Toyoda

Gosei oder Koenen Kunststofftechnik.

Using the new MAPLAN MTF 250/40C, AS-Z now has the possibility of moulding products made on the basis of samples for its customers. It is also possible to produce small production runs in this sampling phase.



www.as-zerspanung.de

MAPLAN International

MAchinery + PLANing: presentation of our USA branch

MAPLAN’s sales & service facilities in North America

MAchinery+PLANing is the name of MAPLAN’s headquarters for North America. We are situated in Hanover Park, a central northwest suburb of Chicago, conveniently located 24 miles from O’Hare airport and easily accessible from several major interstate highways.

MAPLAN has been in this purpose built, 20,000 square foot facility since 2002. In addition to our administrative offices, we house our marketing and technical support operations for MAPLAN rubber and TPE injection moulding presses and ancillary equipment. All of this is manufactured by our parent company MAPLAN GmbH in Ternitz, Austria.



We house a comprehensive stock of spare parts, a service department with complete documentation on all presses sold, and control simulators for various generations of machines. There is a spacious shop floor for housing demonstration machines and facilities for refurbishing machines. This capability is enhanced with a 25 tonne overhead beam crane. Within this facility we can also perform mould trials/turnkey development.

If required we can also provide comprehensive training for new or existing customers. This can be customized to each company’s unique requirements, be it emphasis on electrical, controls, hydraulics, preventative maintenance or process optimisation.

Our Sales team is comprised of 4 individuals, with a combined knowledge of 100 years in elastomer moulding machines. Our service capabilities are enhanced by 4 individuals who each have minimum of 15 years of service with the



The MAPLAN USA team

company. This lack of turnover of service engineers has served MAPLAN and our customers well, enabling us to rapidly respond to various customer needs.

“a service response time of 24 hours or less“

We pride ourselves in providing a service response time of 24 hours or less. 95% of customer issues can be solved over the phone; such teleservice is provided to

our customers at no charge. This has gone a long way to enhance MAPLAN’s reputation for quality service support.

Of course we carry a comprehensive stock of spare parts along with weekly shipments from our factory. Most parts are available “off the shelf” and yet in many cases we can save our customers money when purchasing through us because of our purchasing power.

MAPLAN Innovation

New dimensions: Big, bigger - 320t

The new MAPLAN 320 tonne vertical machine

After the success of the horizontal machine, 300t MHF XL, which is noted for a large daylight area and minimal space requirements, we are now starting the next project.

Just as the 300t MHF machine succeeded in the range of horizontal machines, the 320t MTF vertical machine has also taken its place among MAPLAN's top selling products. It was clear that this machine size was the next priority. However, for the 320 series the task was a bit different. We were not asked to increase the daylight of the moulding area, but instead the platen size.

With the new 670 x780mm heating surface the 320t MTF is compatible with nearly all customer tools of that size.

Another important issue was the working height. The specification was clear; the new 320 series model should allow operation without a platform while favoring ergonomic considerations. While satisfying these objectives, the popular fully hydraulic closing/clamping system was able to be retained. Reviewing the components of the closing unit it was possible to reach a working height of about 1000 mm!

This machine can be teamed with the 3500ccm FIFO injection unit, allowing even really large parts to be moulded.

For special applications involving very high tools and cold runner blocks, customers can also order the "extended" version with increased daylight.

MAPLAN 320t machine features:

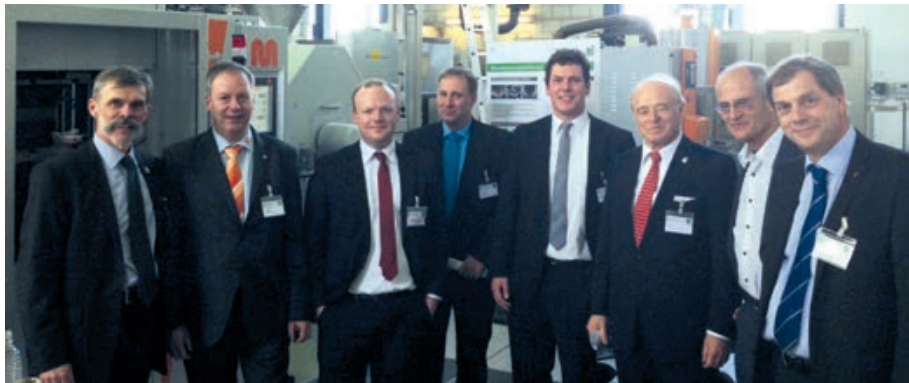
- Heating platen size: 670x780 mm
- Working height: ±1000 mm
- T-slot distance of ejector rails: 720 mm
- Minimum mould height: 200 mm
- Maximum daylight: 750mm



MAPLAN 320 tonne vertical machine

Review

MAPLAN at the IKV colloquium in Aachen



From left to right: Dr.-Ing. F. Buschhaus, WOCO - DI G. Kemper, MAPLAN DI Dipl.-Wi.-Ing C. Behmenburg, IKV - DI K. Fischer, HF Mixing Group DI J.P. Dering, IKV - F. J. Wolf, WOCO - DI R. Hübner, Hübner GmbH Prof. Dr.-Ing. A. Limper, HF Mixing Group

On the 19th and 20th of March 2014 at the IKV colloquium in Aachen Germany, a demonstration of hydrophobic elastomer products was carried out on a MAPLAN MTF750/160editionS during a research project.

The laboratory machine supplied by Maplan Machines has a high specification including the PC5000 advanced control unit, the proven

CoolDrive drive technology and the accurate temperature control of the DCI- heater coolers. In this case the technology was the particular mould surface itself. This surface was produced by using a special laser technique, which can obtain a particularly fine surface.

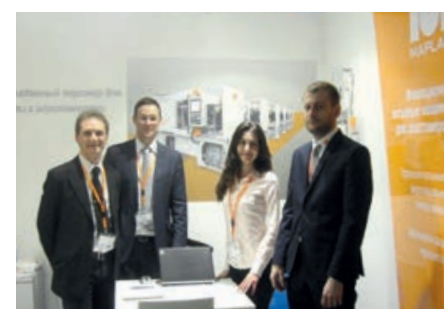
As a result a pearl effect was demonstrated with a single drop of water on the finished part.

Review

MAPLAN at the Interplastica 2014

Recently MAPLAN was represented with an individual fair stand at the Interplastica trade fair, which took place in Moscow, Russia, from

January 28th till January 31st 2014.



MAPLAN Team at the Interplastica 2014

In spite of the difficult economic environment in Russia, a large number of customers visited our stand and used that opportunity to discuss existing and new projects with the Russian and Austrian sales team.

MAPLAN GmbH has its own sales and service organization for the Russian market which is MAPLAN OOO.

Upcoming events

Tires & Rubber	Moscow, Russia	22 - 25 April 2014	Booth 1F65
Chinaplas	Shanghai, PR China	23 - 26 April 2014	Hall E6 Booth B51
Expobor	Sao Paulo, Brazil	23 - 26 April 2014	Booth JK02
Plastpol	Kielce, Poland	27 - 30 May 2014	Hall F
MAPLAN Days of Technology		4 - 5 June 2014	Ternitz, Austria
Argenplas	Buenos Aires, Argentina	16 - 19 June 2014	Booth F63



AUSTRIA

MAPLAN GmbH
Schoellergasse 9
A-2630 Ternitz
AUSTRIA
Tel.: +43 2630 35706
e-mail: office@maplan.at
www.maplan.at

GERMANY

MAPLAN Deutschland GmbH
Gottlieb-Daimler-Straße 66
D-71711 Murr
GERMANY
Tel: +49 7144 89737 3
e-mail: office@maplan-germany.de

RUSSIA

MAPLAN OOO
Ogorodniy proezd, 5 str. 2
Office 312
RU-127254 Moscow
RUSSIA
Tel: +7 495 618 6079
e-mail: office@maplan.ru

FRANCE

MAPLAN France
2574, avenue des Landiers
FR-73000 Chambéry
FRANCE
Tel: +33 4 79 96 31 02
e-mail: office@maplan.fr

CHINA

Shanghai Gentle Service Co., Ltd.
Mr. Junie Mao
Of No. 11 Alley 77 Hefei Road
CN-200025 Shanghai
P.R. CHINA
Tel: +86 13611 916 224
e-mail: office@maplan.cn

USA

MAchinery + PLANning Inc.
900 Muirfield Drive
USA-Hanover Park,
IL 60133, USA
Tel: +1 630 924 0100
e-mail: office@maplan-usa.com

INDIA

MAPLAN India
130 - C, Pocket - C
Mayur Vihar, Phase - II
Dehli - 110091, INDIA
Tel: +91 91 9560015040
e-mail: office@maplan.in